



# SCOPE STORAGE AND SUPPLY CABINETS



CAPSAHEALTHCARE

 is now part of Capsa Healthcare

Endoscopy  
Surgical  
Cardiology



# This is Capsa Healthcare

Organized, secure storage. Improved efficiency. Patient safety. Whatever your need, Capsa Healthcare provides the right medical storage solutions to meet your facility needs, and help you deliver the best patient care.

Capsa Healthcare is a worldwide leader in developing and delivering innovative healthcare storage and workflow solutions that can be found in healthcare facilities around the world. Capsa's medical storage products streamline workflow and improve procedure safety in hospitals and surgery centers. Capsa Healthcare is focused on the reduction of nosocomial infections, protection of valuable medical equipment, and clinician safety with every medical storage product we design.

## Solutions designed for:

- GI Labs
- Surgical Suites
- Hybrid ORs
- Cath Labs
- Emergency/Critical Care
- General Supply

**MASS**

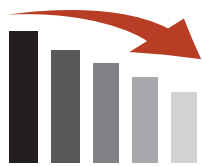
is now part of **Capsa Healthcare**



The TruAir™ Scope System provides healthcare facilities with range of solutions to safely store, transport and protect endoscopy equipment. TruAir™ scope storage and drying cabinets satisfy the Joint Commission standards set by Infection Control, and manufacturer requirements for storage, and are the most highly compliant in the industry.

Capsa's team of experts will work with you to design and build a tailored storage system to best fit your specific size and quantity of scopes, including colonoscopes, EUS scopes, TEE probes, bronchoscopes, cystoscopes, laparoscopes and small or large-diameter scopes.

The TruAir™ Scope System enables facilities to maintain compliance, best practices, and protect patient safety.



## Reduction of Nosocomial Infection

Capsa Healthcare is committed to helping facilities reduce infection rates. Our cabinets and carts are manufactured to support infection control protocols across all patient procedure areas.



## Protection of Valuable Medical Equipment

Damage prevention is a major factor in choosing the right storage solution. Combined with proper handling, our products protect valuable equipment used throughout acute care facilities.



## Advancement of Clinical Safety

As a design forward company, we understand the importance of ergonomic reach zones within acute care settings. We design and manufacture medical storage products with the goal of advancing clinician safety through improved ergonomics.

# TruAir™ Scope Drying Cabinet

The TruAir™ Scope Drying Cabinet is designed to keep endoscopes safe and dry while adhering to ST91 guidelines. The cabinet features a TruHEPA-filtered airflow system that creates a positive pressure barrier to reduce the risk of contamination. The TruAir™ system simultaneously provides HEPA-filtered air to up to 18 flexible endoscope lumens, filtering particles as small as 0.03µm with a filtration rate of 99.97%.

- Capacity for 4-18 flexible endoscopes
- Self-contained TruHEPA-filtered air system
- Fastest flow rate in the industry of 65 L/min (6 L/min per scope)
- Optional LED lighting
- Rotating scope hooks (front row) eliminate risk of cross-contamination
- Powder coated metal or stainless steel finish options
- Keyed and keyless locking systems for added security
- HEPA option available at 99.97% filtration for up to 0.3 microns
- HA option available at 99.98% filtration for up to 0.1 microns
- 7-year warranty



**Half-Width:**  
**White Powder Coat**  
 4 or 8 Capacity  
 W 21.625"  
 D 18.75"  
 H 93.75"



**Full-Width:**  
**White Powder Coat**  
 9 or 18 Capacity  
 W 40.875"  
 D 18.75"  
 H 93.75"



**Half-Width:**  
**Stainless Steel**  
 4 or 8 Capacity  
 W 21.625"  
 D 18.75"  
 H 93.75"



**Full-Width:**  
**Stainless Steel**  
 9 or 18 Capacity  
 W 40.875"  
 D 18.75"  
 H 93.75"



**Full-Width:**  
**Stainless Steel/Red Accent**  
 9 or 18 Capacity  
 W 40.875"  
 D 18.75"  
 H 93.75"



## Specifications

- Air Flow Rate Filter Efficiency:** 6 L/min per Scope (Minimum)
- Air Pressure:** 4 psi (Maximum)
- Noise:** 45 db
- Linear Pump Filter Efficiency:** 99.97% up to 0.3µm
- Cabinet Filter Efficiency:** 99.97% up to 0.3µm
- Electrical Supply:** 120 V Wall Plug-3A (8" Cord Exiting Top Right of Cabinet)
- Power Consumption:** Up to 128W
- Rated Amperage:** 4.1A



# TruAir™ Scope Storage Cabinet

The TruAir™ Scope Storage Cabinet is a safe and reliable solution for securely storing endoscopes. The cabinet is equipped with a TruHEPA filter circulation fan, which creates continuous positive air pressure inside the cabinet. It offers the capacity to store up to 18 endoscopes, and includes a hinged glass door with options for a key or keyless lock for added security.

- Capacity for 4-18 flexible endoscopes
- Self-contained TruHEPA-filtered air system
- Rotating scope hooks (front row) for greater access
- Powder coated metal or stainless steel finish options
- Keyed and keyless locking systems for added security
- Optional LED lighting
- Option for pass-through endoscope storage cabinet
- 7-year warranty



**Half-Width:**  
**White Powder Coat**  
 4 or 8 Capacity  
 W 21.625"  
 D 18.75"  
 H 93.75"



**Full-Width:**  
**White Powder Coat**  
 9 or 18 Capacity  
 W 40.875"  
 D 18.75"  
 H 93.75"



**Half-Width:**  
**Stainless Steel**  
 4 or 8 Capacity  
 W 21.625"  
 D 18.75"  
 H 93.75"



**Full-Width:**  
**Stainless Steel**  
 9 or 18 Capacity  
 W 40.875"  
 D 18.75"  
 H 93.75"

## Specifications

**Cabinet Filter Efficiency:** Removes 99.97% of Particles (up to 0.3µm)

**Air Supply:** HEPA Filter Fan (Cabinet)

**Storage Capacity:** 4-18 flexible endoscopes

**Electrical Supply:** 120 V Wall Plug-3 A (8" Cord Exiting Top Right of Cabinet)



# TruAir™ Scope Storage Wall Cabinet

The TruAir™ Scope Wall Cabinet is designed for storing small-diameter endoscopes. It is optimized for scopes that do not have an integral light guide cable or removable video/light processor cord. Depending on your facility's infection control policy, the cabinet can store up to 8 Bronchial, TEE or ENT scopes without light guides or up to 4 with light guides.

- Capacity for 4-8 small-diameter endoscopes
- Adjustable scope holders
- Constructed of antimicrobial HDPE Plastic for easy cleaning
- Keyed and keyless locking systems for added security
- Optional TruHEPA Air Filter available



## Specifications

**External Dimensions:** 19.25"W x 11.75"D x 48.75"H

### Construction:

- White HDPE Plastic
- Locking Hinged Glass Doors

**Air Supply:** Optional TruHEPA Air Filter

**Capacity:** Up to 8 ENT Scopes



Scope Storage Wall Cabinet

# TruAir™ Scope Transport Cart

The TruAir™ Scope Transport Cart prevents scope damage and cross-contamination during transport. Its open-frame design offers better visibility and reduces cleaning time. The gapless construction discourages debris accumulation, helping to maintain cleanliness. The transport cart is available in two heights with either 4 or 6 extra deep trays with lids that prevent damage caused by tightly coiled scopes, which follows SGNA recommendations.

- Capacity for four or six flexible endoscopes
- Autoclavable trays with lids offer deep storage
- Clear, red or green color-coded transport liner bags available
- Sterile or non-sterile transport liner bags available
- Stainless steel finish
- Multi-point tray grips to keep scopes in place



## Specifications

**External Dimensions:** 4 Scopes: 22"W x 25"D x 34"H

6 Scopes: 22"W x 25"D x 38"H

**Capacity:** 4 or 6 trays with Lids

### Construction:

- Stainless Steel
- Tray stops
- 4" diameter casters

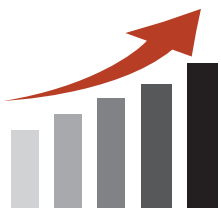
The **FLX** and **MAX** storage cabinet solutions provide healthcare facilities with range of solutions to efficiently organize and safely store clinical and procedural supplies.

The **FLX** line of storage cabinets offer a highly flexible storage solution built to industry standard 36" width. **FLX** cabinets are sized for easy installation or replacement of existing cabinets. At 41" in width the **MAX** storage cabinets are the ideal solution for high-capacity storage and supply organization needs.

Capsa's team of experts will work with you to design and build an efficient storage system to best fit your facility's storage needs and space requirements.

**Ideal for supplies storage in:**

- Surgical Suites
- Hybrid ORs
- Cath Labs
- Emergency/Critical Care
- General Supply



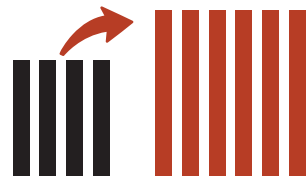
## Improved Efficiency

Storage cabinets offer a range of interior organization components and accessories designed to optimize supply organization and improve efficiency.



## Secure Storage

Lock system options provide secure storage of procedural and clinical supplies



## Increased Flexibility

Flexible and adaptable solutions offer a future-proof design that can be reconfigured as storage requirements change.

# FLX Storage Cabinets

FLX Storage Cabinets offer a highly flexible storage solution for clinical and procedural supplies in healthcare facilities. Built to industry standard width, FLX cabinets are sized for easy installation or replacement of existing cabinets. The cabinets are designed with translucent interior components to provide easy visibility of stored supplies. FLX cabinets are available in four pre-configured models or are customizable to fit workflow requirements.

- Customizable and pre-configured models are available
- Interior components options include trays and bins, slot shelves, sliding shelves, and catheter FIFO module
- Finish options include powder coated metal or stainless steel
- Keyed and keyless locking systems for added security
- Translucent interior components to easily view supplies
- Available with casters or a four or six-inch toe kick
- Optional door-activated LED lighting



**Rolling Cabinet 36"**  
36"W x 27"D x 78"H

**Fixed Cabinet 36"**  
36"W x 27"D x 75.5"H  
(4" toe kick)  
36"W x 27"D x 77.5"H  
(6" toe kick)

**Rolling Cabinet 19"**  
18.5"W x 27"D x 78"H

**Fixed Cabinet 19"**  
18.5"W x 27"D x 75.5  
H (4" toe kick)  
18.5"W x 27"D x 77.5"H  
(6" toe kick)

**Rolling Cabinet 60"**  
60"W x 29.875"D x 78"H

## Specifications

**Construction:** Powder Coated Metal with Locking Hinged Glass Doors

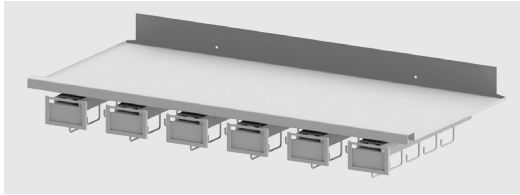
**Available Finishes:** Bright White or Stainless Steel

**Options:**

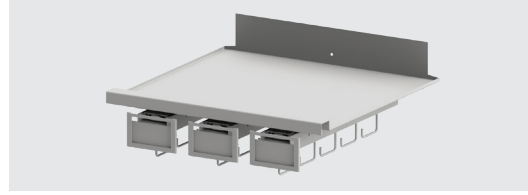
- Door Activated LED Lighting
- Keyless Lock



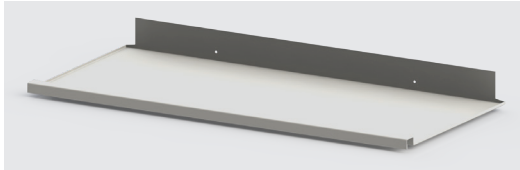




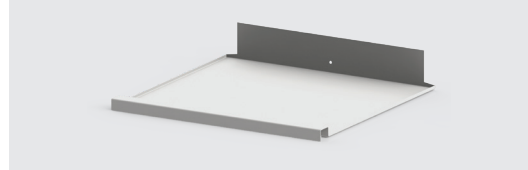
Full-Width Shelf With FIFOglide Rack\*



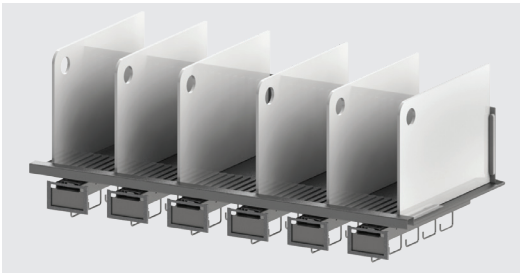
Half-Width Shelf With FIFOglide Rack\*



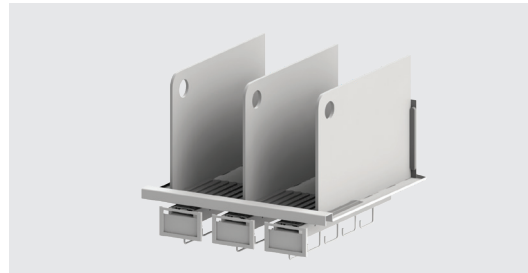
Full-Width Shelf



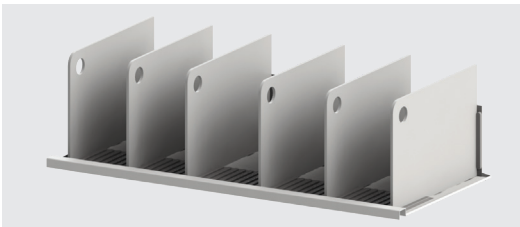
Half-Width Shelf



6 Column SlotShelf With FIFOglide Rack\*



3 Column SlotShelf With FIFOglide Rack\*



6 Column SlotShelf

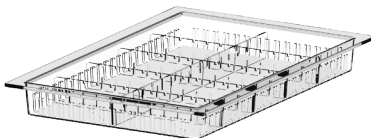


3 Column SlotShelf

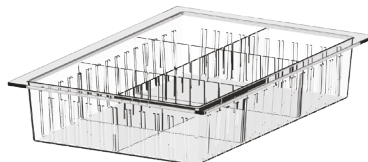


FIFOglide\*

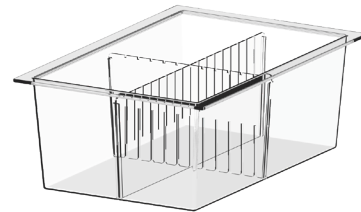
*\* Side View of FIFOglide Rack Arm*



Divided ISO Trays - 2" Depth



Divided ISO Trays - 4" Depth



Divided ISO Trays - 8" Depth



Keyed Cabinet Lock



Keyless Cabinet Lock



LED Light Strip

# MAX Storage Cabinets

The MAX Storage Cabinets offer a high-capacity, versatile, and organized storage solution to meet facility workflow needs. MAX Cabinets are 5" wider than FLX Cabinets to provide expanded storage when needed. Choose from four pre-configured models or tailor cabinets to suit storage requirements. The cabinets are available in multiple sizes, making it easier to fit within varying room layouts.

- Customizable and pre-configured models are available
- Interior component options include trays and bins, slot or sliding shelves, and catheter FIFO module
- Powder coated metal or stainless steel finish options
- Keyed and keyless locking systems for added security
- Translucent interior components to easily view supplies
- Available with casters or three or six-inch toe kick
- Optional door-activated LED lighting



**Rolling Cabinet 41"**  
40.875"W x 24"D x 78"H



**Rolling Cabinet 21"**  
21.625"W x 24"D x 78"H



**Fixed Cabinet 41"**  
40.875"W x 22.75"D x 84"H



**Fixed Cabinet 21"**  
21.625"W x 22.75"D x 84"H

## Specifications

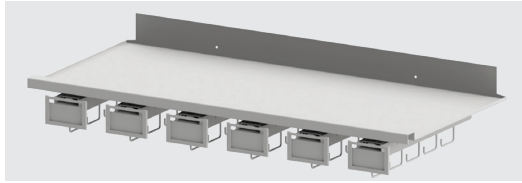
**Construction:** Powder Coated Metal with Locking Hinged Glass Doors

**Available Finishes:** Bright White or Stainless Steel

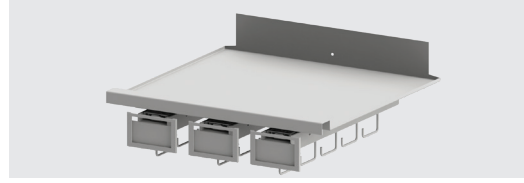
### Options:

- Door Activated LED Lighting
- Keyless Lock

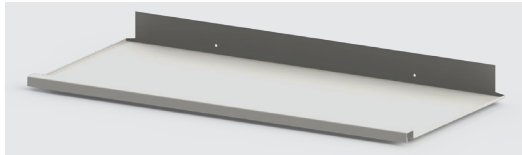




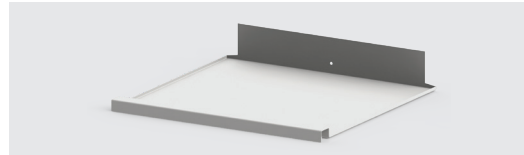
Full-Width Shelf with FIFOglide Rack\*



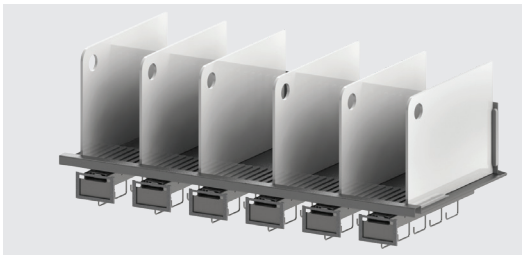
Half-Width Shelf With FIFOglide Rack\*



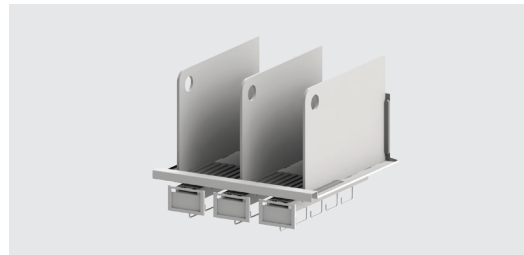
Full-Width Shelf



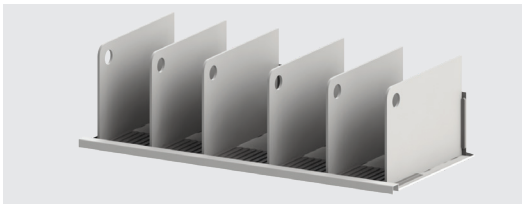
Half-Width Shelf



6 Column SlotShelf with FIFOglide Rack\*



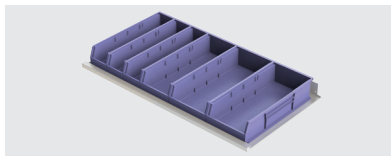
3 Column SlotShelf with FIFOglide Rack\*



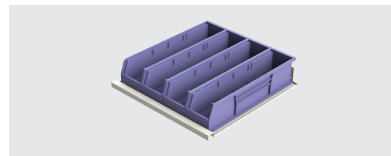
6 Column SlotShelf



3 Column SlotShelf



Full-Width Bin Module



Half-Width Bin Module



Vertical Divider Module



3" Exchange Tray with Dividers



6" Exchange Tray with Dividers



9" Exchange Tray with Dividers



Keyed Cabinet Lock



Keyless Cabinet Lock



Suture Shelves



LED Light Strip

\* see pg. 9 for Side View of FIFOglide Rack

Elevating performance,  
**every day.**



**CAPSAHEALTHCARE**

CapsaHealthcare.com | 800.437.6633

8170 Dove Parkway  
Canal Winchester, Ohio 43110